



The Way to
a CAREER
in AFNR

< SCAN WITH YOUR SMART PHONE

minnstate.edu/AFNRCareers

Visit us at
agcentric.org

Judy Barka
Assistant Director
Judy.Barka@clcmn.edu
(320) 221-0219



Visit us at
centerofagriculture.org

Courtney Spence
Outreach and Recruitment Coordinator
Courtney.Spence@southcentral.edu
(507) 389-7301

\$2,500 WORKFORCE DEVELOPMENT SCHOLARSHIPS

These workforce development scholarships are for students pursuing careers within advanced manufacturing, agriculture, health care services, information technology, early childhood education, and transportation at any of the 26 state colleges of Minnesota State.



For more information
and to apply visit:
www.minnstate.edu/wds

This document is available in alternative formats to individuals with disabilities. To request an alternate format, contact Human Resources at 651-201-1664. Individuals with hearing or speech disabilities may contact us via their preferred Telecommunications Relay Service. Minnesota State is an affirmative action, equal opportunity employer and educator.

Minnesota State Colleges & Universities

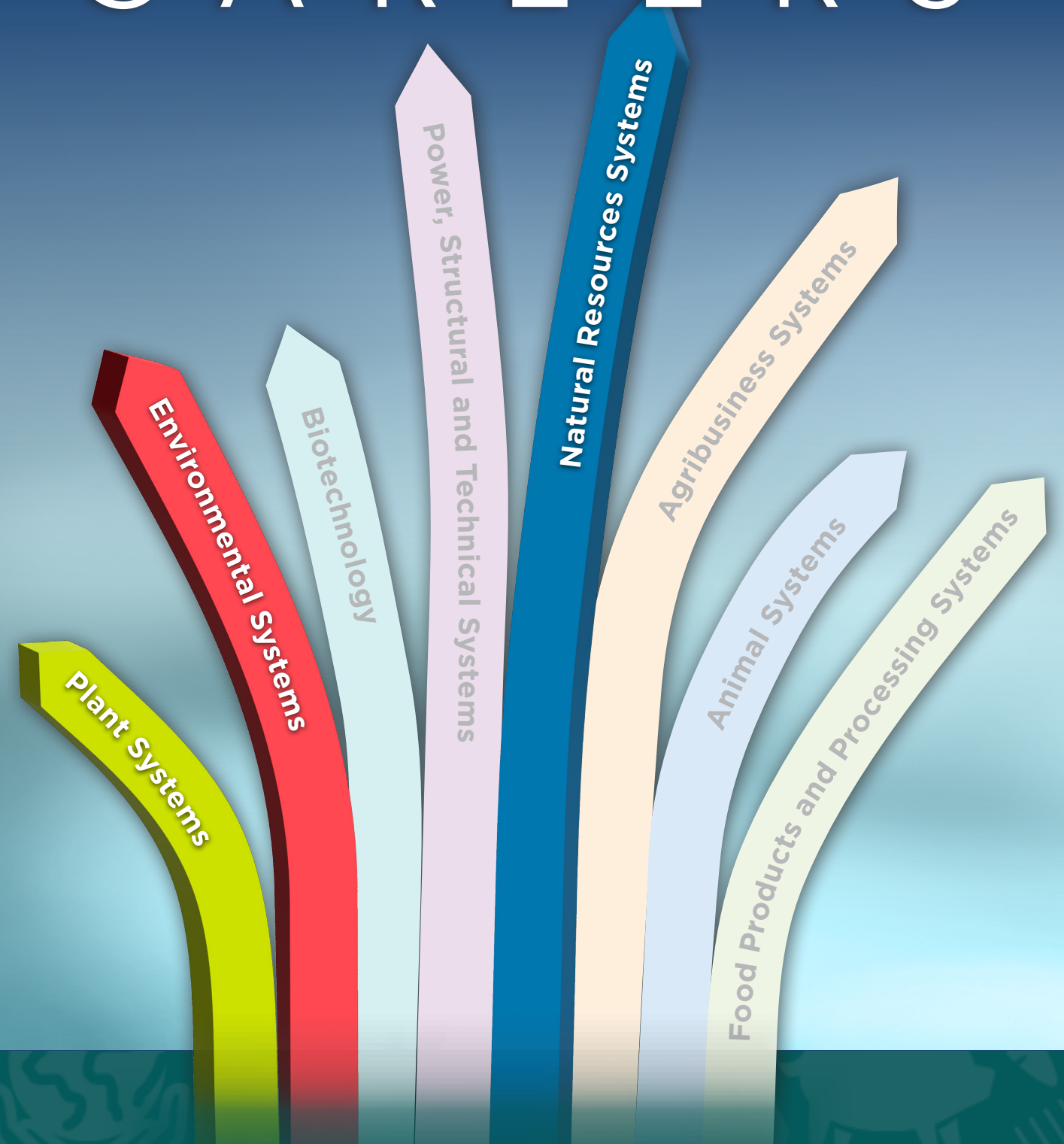
Agriculture, Food, & Natural Resources (AFNR)

MAJORS & PROGRAMS

by Career Cluster

	Agribusiness Systems	Power, Structural, and Technical Systems	Natural Resources Systems	Food Products and Processing Systems	Environmental Systems	Animal Systems	Plant Systems	Biotechnology	Agricultural Education
Alexandria Technical & Community College	♦								
Anoka Technical College	♦								
Anoka-Ramsey Community College				♦					
Bemidji State University	♦			♦	♦	♦	♦	♦	
Central Lakes College	♦	♦	♦	♦	♦	♦	♦		
Century College	♦								
Dakota County Technical College	♦			♦		♦			
Fond Du Lac Tribal & Community College	♦				♦				
Hennepin Technical College	♦	♦	♦				♦		
Inver Hills Community College					♦				
Lake Superior College	♦	♦							
Minnesota North College	♦	♦	♦	♦	♦				
Minnesota State College Southeast	♦	♦							
Minnesota State University, Moorhead	♦				♦	♦			
Minnesota State Community and Technical College	♦				♦				
Metro State University					♦				
Minneapolis Community & Technical College	♦	♦							
Minnesota State University, Mankato	♦	♦		♦	♦			♦	
Minnesota West Community & Technical College	♦	♦	♦	♦	♦	♦	♦	♦	♦
Normandale Community College				♦					
North Hennepin Community College					♦				
Northland Community & Technical College	♦	♦				♦			♦
Pine Technical & Community College	♦								
Ridgewater College	♦	♦		♦		♦	♦		♦
Riverland Community College	♦	♦		♦					♦
Rochester Community and Technical College	♦				♦	♦			
St. Cloud State University	♦	♦			♦	♦			
Saint Paul College	♦			♦					
St. Cloud Technical & Community College	♦			♦	♦				
South Central College	♦	♦		♦		♦	♦		♦
Southwest Minnesota State University	♦			♦	♦	♦			♦
Winona State University					♦	♦			
MinnState.edu/online	♦	♦							

CONSERVATION CAREERS



MINNESOTA STATE
Agricultural Centers of Excellence



Are you going in the right direction?

Explore a future career in Conservation Agronomy!

TOP EMPLOYERS ADVERTISING ROLES

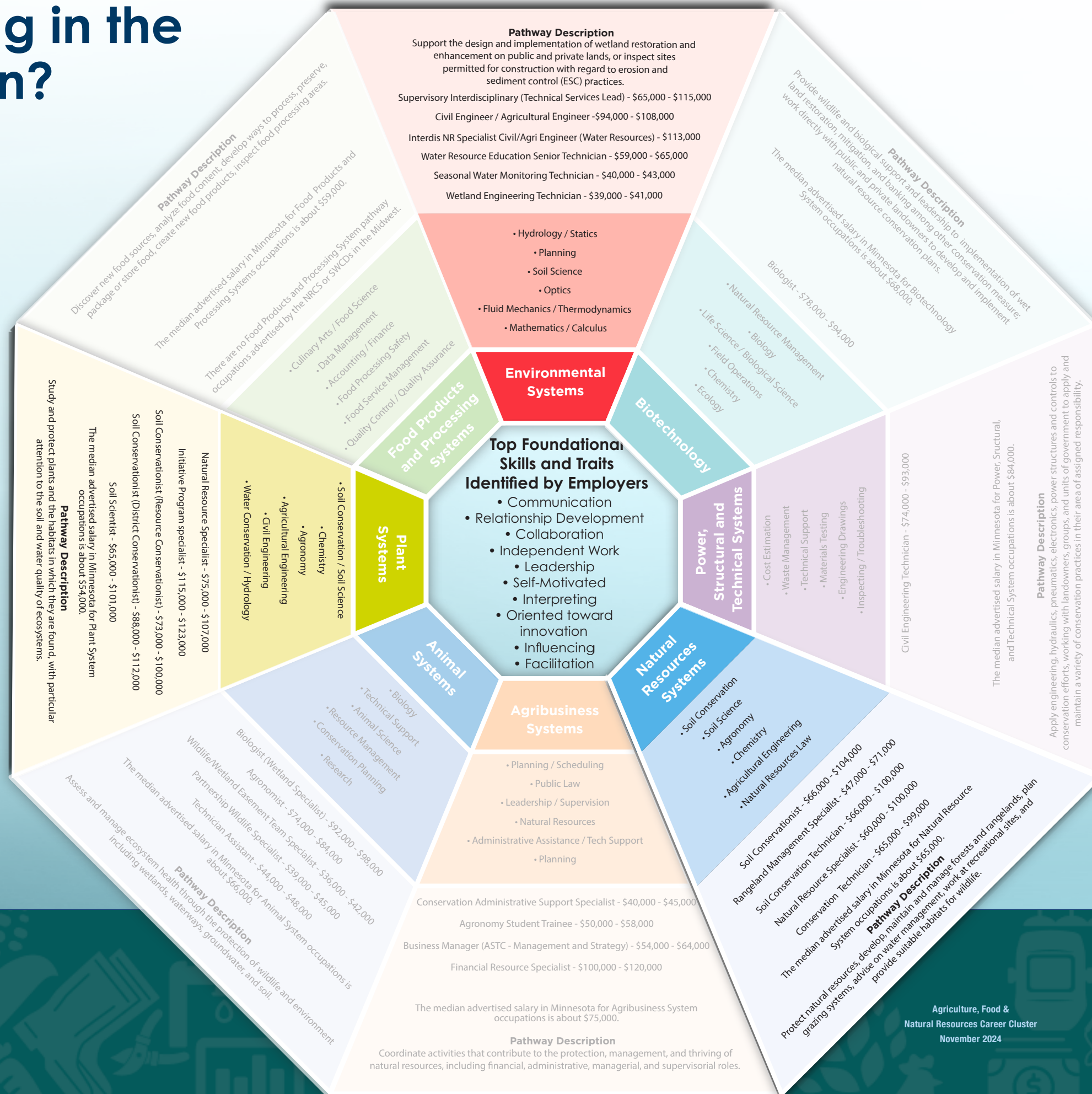
- 1 The Nature Conservancy
- 2 Innovative Ag Service
- 3 Cargill
- 4 Natural Resources Conservation Service
- 5 Soil and Water Conservation Areas
- 6 Pheasants Forever

SOURCE: 2020 Minnesota Economic Contribution Study of Agriculture and Forestry

HIGH-LEVEL STATISTICS AND OBSERVATIONS FROM JOB POSTINGS BY NRCS AND SWCDS

Soil Science, Resource Management, Biological Science, Agronomy, and Public Law were common **KNOWLEDGE AREAS** needed across most career pathways.

SOURCE: RealTime Talent analysis of online job posting data aggregated using TalentNeuron, accessed October 22, 2024. Note: All content in this report details aggregate data from online job postings newly advertised by NRCS and SWCDS between October 15, 2023 and October 14, 2024 in the Midwest (Minnesota, Iowa, Wisconsin, North Dakota, and South Dakota) with the exception of the overall median advertised salary for each pathway. This represents median advertised wages for pathway jobs posted by any employer in Minnesota.



IN 2050
THERE WILL BE
9 BILLION
PEOPLE TO FEED.

WHAT ROLE COULD YOU PLAY?

TOP KNOWLEDGE AREAS AND HARD SKILLS IDENTIFIED

- Agronomy
- Implementation
- Research/Analysis
- Planning
- Resource Management
- Soil Health/Soil Science
- Natural Resources
- Regenerative Agriculture
- Agriculture Industry Trends
- Marketing

SOURCE: RealTime Talent. Annual wage increase amounts calculated in comparison to the same MN State AFNR Career Pathway data from the previous year.

47% of job postings advertised in the Midwest by NRCS and SWCDS are for **CONSERVATION SCIENTISTS**

Agriculture, Food & Natural Resources Career Cluster
November 2024